

INSTRUCTIONS



PN 11485

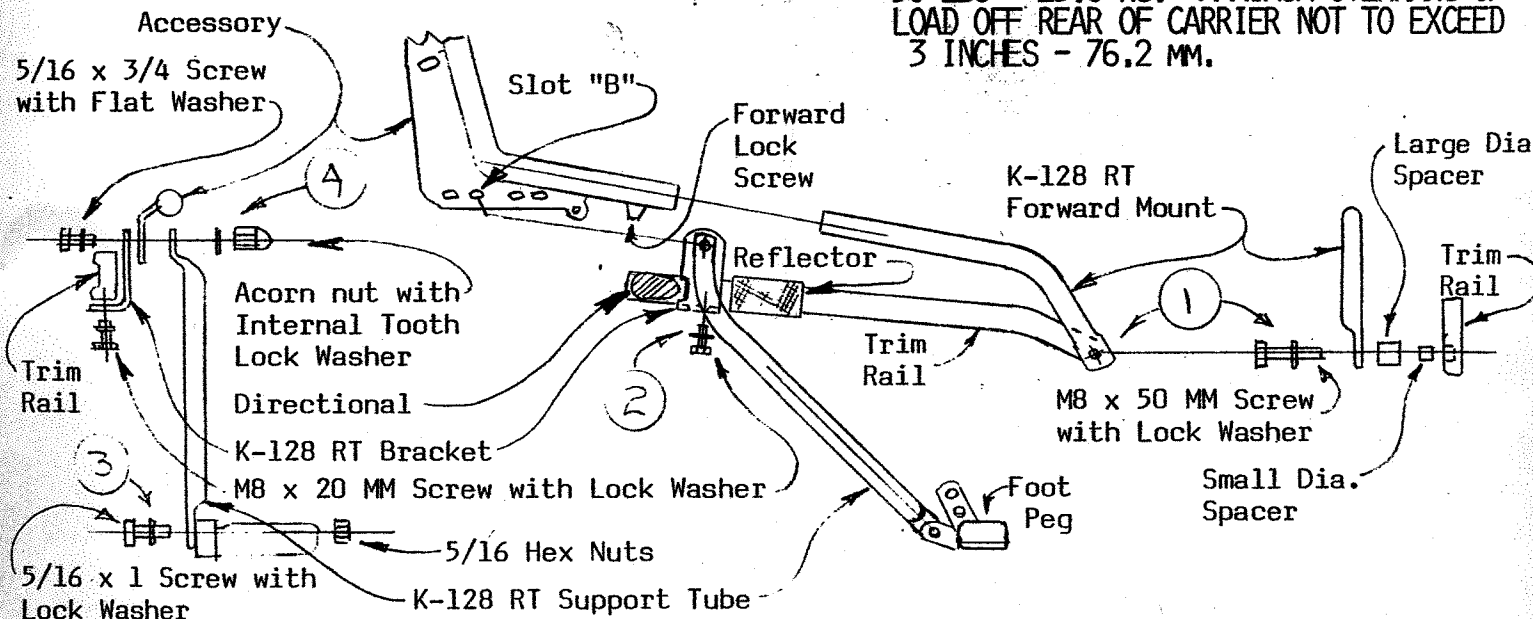
NO. K0128

DATE 5-9-84

K0128 OMNI II MOUNTING KIT FOR
OR006 SPORT CARRIER, OR015 TOURING CARRIER
OS050 SISSY BAR, OL060 LEANER

HONDA V65 SABRE "84"

NOTE: MAXIMUM LOAD FOR CARRIERS IS
30 LBS - 13.6 KG. MAXIMUM OVERHANG OF
LOAD OFF REAR OF CARRIER NOT TO EXCEED
3 INCHES - 76.2 MM.



- ① Remove trim rail mount screw and attach forward mounts using hardware and spacers shown. NOTE: Right hand mount is marked "R".
- ② Attach K-128 Bracket between reflector and directional post using hardware shown. NOTE: Right hand bracket is marked "R".
- ③ Attach K-128 Support tubes to foot peg casting using hardware shown. NOTE: Right hand support tube is marked "R".
- ④ Spread or narrow accessory to match width at forward mounts and slide onto mounts. Place accessory bracket between bracket and support tube and attach at slot "B" with hardware shown.
- ⑤ Tighten all hardware securely including forward lock screws.
On OR015 tighten cross rail screws. On OS050 and OL060 tighten pad mounting screws.

IT IS RECOMMENDED THAT THESE PRODUCTS BE CLEANED AND WAXED REGULARLY TO PRESERVE FINISH.

PARTS LIST

- | | |
|-----------------------------|--------------------------------------|
| (1) Ea RT/LF Forward Mounts | (2) 5/16 x 3/4 Screws |
| (1) Ea RT/LF Brackets | (2) 5/16 x 1 Screws |
| (1) Ea RT/LF Support Tubes | (6) 5/16 Lock Washers |
| (2) Large Dia Spacers | (2) 5/16 Internal Tooth Lock Washers |
| (2) Small Dia Spacers | (2) 5/16 Acorn Nuts |
| (2) M8 x 50 MM Screws | (2) 5/16 Hex Nuts |
| (2) 5/16 Flat Washers | |

CAUTION

Due to unique vibrations created by operation of the motorcycle, manufacturer recommends periodic visual inspection of accessory to assure secure mounting as indicated above. Operator should not overload or abuse the product as insecure mounting may result.

